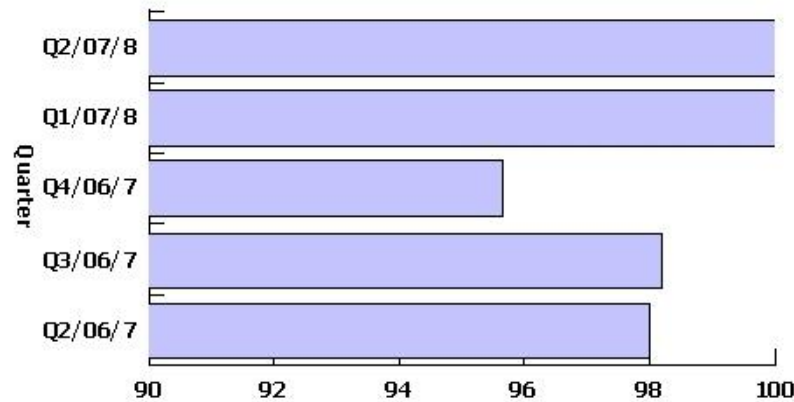


BV106 New Homes on Previously Developed Land

Responsible officer: John Preston

Additional Information This indicator measures the provision of new housing built on previously developed land in order to minimise development on green fields, as a percentage of all new dwellings.

Chart - Current and previous four quarters



Direction of improving performance:



Cumulative data?: Yes

Table - Current and previous four quarters

Quarter	Target	Actual	Target Met?
Q2/07/8	89.67%	100.00%	✓
Q1/07/8	89.67%	100.00%	✓
Q4/06/7	90.00%	95.65%	✓
Q3/06/7	90.00%	98.19%	✓
Q2/06/7	90.00%	98.00%	✓
Final Figure 05/06		Final Figure 06/07	
98.65%		95.65%	
	Target Met 06/07	Target 07/08	Target 08/09
	Yes	89.67%	

Is it likely that the target will be met at the end of the year? Yes

Comment on current performance:

Target met.

Corrective action proposed (if required):

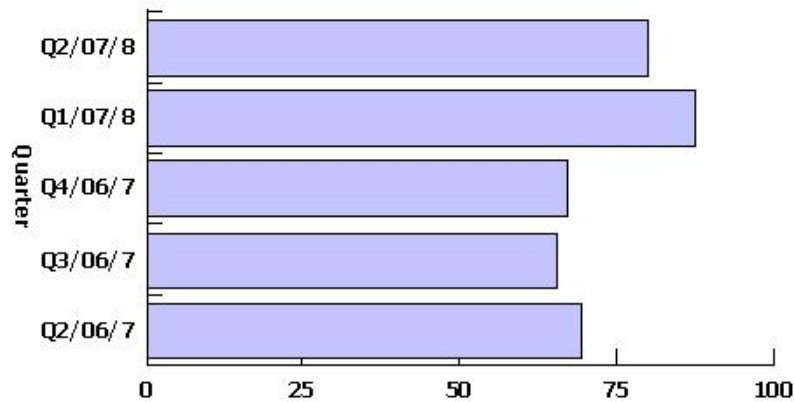
The Improvement Plan for this KPI for 2007/08 will be considered by Management Board during November 2007. Agreed improvement actions will be reflected here from Quarter 3 onwards.

BV109a Planning Applications: Major Applications

Responsible officer: John Preston

Additional information This indicator measures the extent to which major planning applications are determined in a timely manner, and is expressed as a percentage of all major applications.

Chart - Current and previous four quarters



Direction of improving performance:



Cumulative data?: Yes

Table - Current and previous four quarters

Quarter	Target	Actual	Target Met?
Q2/07/8	74.75%	80.00%	✓
Q1/07/8	74.75%	87.50%	✓
Q4/06/7	71.25%	67.24%	✗
Q3/06/7	71.25%	65.30%	✗
Q2/06/7	71.25%	69.40%	✗
Final Figure 05/06		Final Figure 06/07	
54%		67.24%	
	Target Met 06/07	Target 07/08	Target 08/09
	No	74.75%	

Is it likely that the target will be met at the end of the year? Uncertain

Comment on current performance:

This figure exceeds the Government's target of 60% and the BVPP target of 74.75% (derived from top quartile performance).

Corrective action proposed (if required):

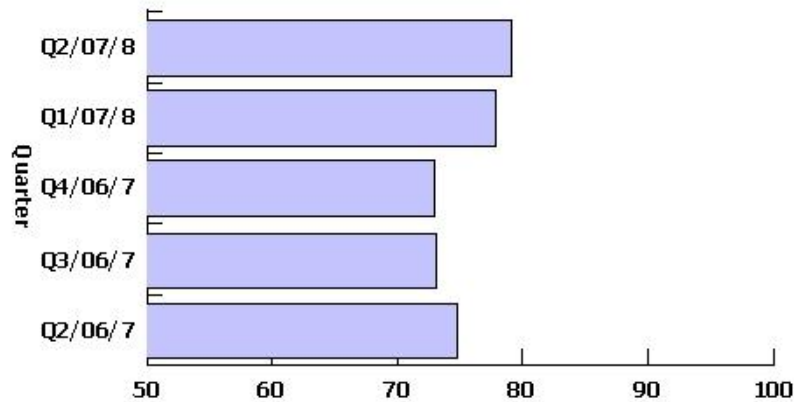
Efficiencies will be obtained from full implementation of ERDMS and scanning of hard files, and through staff training; maintaining a full establishment of staff; a review of workloads and resources; a budget to enable employment of agency staff/consultants as needs arise.

BV109b Planning Applications: Minor applications

Responsible officer: John Preston

Additional information This indicator measures the extent to which minor planning applications are determined in a timely manner, and is expressed as a percentage of all minor applications.

Chart - Current and previous four quarters



Direction of improving performance:



Cumulative data?: Yes

Table - Current and previous four quarters

Quarter	Target	Actual	Target Met?	
Q2/07/8	80.39%	79.08%	X	
Q1/07/8	80.39%	77.89%	X	
Q4/06/7	75.33%	72.96%	X	
Q3/06/7	75.33%	73.10%	X	
Q2/06/7	75.33%	74.70%	X	
Final Figure 05/06	Final Figure 06/07	Target Met 06/07	Target 07/08	Target 08/09
57%	72.96%	No	80.39%	

Is it likely that the target will be met at the end of the year? Uncertain

Comment on current performance:

This exceeds the Government target (65%) but is just below the very challenging, BVPP top quartile target (80.39%). Continuing an upward trend, however.

Corrective action proposed (if required):

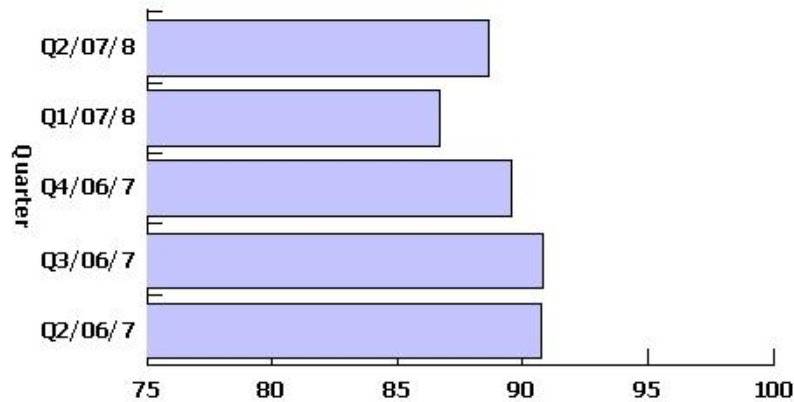
Efficiency gains will result from the implementation of the ERDMS; Scanning of hard files; Business Process Review work following introduction of '1APP' national application forms; a review of workloads and resources to be undertaken by the Value for Money Scrutiny Panel; essential maintenance of a full establishment of staff; a budget to enable employment of agency staff/consultants

BV109c Planning Applications: 'Other' applications

Responsible officer: John Preston

Additional Information This indicator measures the extent to which all other planning applications are determined in a timely manner, and is expressed as a percentage of all 'other' applications.

Chart - Current and previous four quarters



Direction of improving performance:



Cumulative data?: Yes

Table - Current and previous four quarters

Quarter	Target	Actual	Target Met?	
Q2/07/8	91.61%	88.60%	✘	
Q1/07/8	91.61%	86.62%	✘	
Q4/06/7	88.03%	89.54%	✔	
Q3/06/7	88.03%	90.80%	✔	
Q2/06/7	88.03%	90.70%	✔	
Final Figure 05/06	Final Figure 06/07	Target Met 06/07	Target 07/08	Target 08/09
80%	89.54%	Yes	91.61%	

Is it likely that the target will be met at the end of the year? Uncertain

Comment on current performance:

This exceeds the Government's target (80%), but is below the very challenging BVPP top-quartile target (91.61%). Regained an upward trend however.

Corrective action proposed (if required):

Efficiencies will be obtained from full implementation of Anite@Work ERDMS and scanning of hard files. The capabilities of new staff will continue to be developed through formal and informal training. Further Business Process Review work following introduction of '1APP' national application forms may lead to further efficiencies.

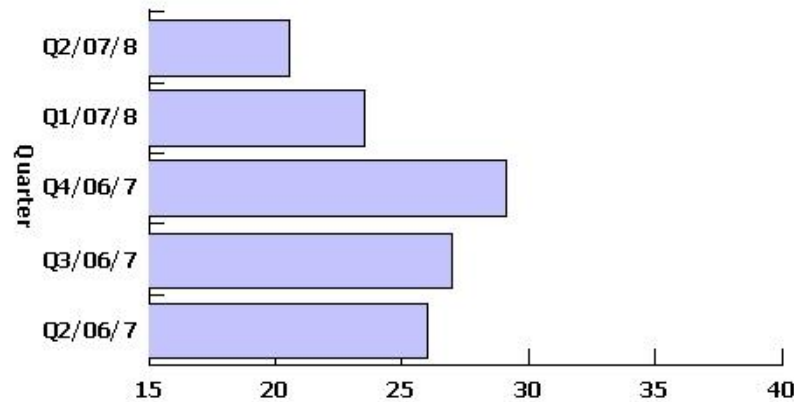
It will be essential to maintain a full establishment of staff, plus a budget to enable employment of agency staff/consultants as the needs arise. A review of workloads and resources to be undertaken by the Value for Money Scrutiny Panel may result in additional staff resources being recognised if achievement of this target is to be realised.

BV204 Planning Appeals

Responsible officer: John Preston

Additional Information This indicator measures the level of successful appeals against the refusal of planning applications, and is expressed as a percentage of all refusal appeals.

Chart - Current and previous four quarters



Direction of improving performance:



Cumulative data?: Yes

Table - Current and previous four quarters

Quarter	Target	Actual	Target Met?
Q2/07/8	25.00%	20.50%	✓
Q1/07/8	25.00%	23.50%	✓
Q4/06/7	24.00%	29.10%	✗
Q3/06/7	24.00%	27.00%	✗
Q2/06/7	24.00%	26.00%	✗
Final Figure 05/06		Final Figure 06/07	
22%		29.10%	
	Target Met 06/07	Target 07/08	Target 08/09
	No	25%	

Is it likely that the target will be met at the end of the year? Uncertain

Comment on current performance:

In this case, a low % is being sought. The national average is 30.6% and this performance exceeds both this and the BVPP top quartile target of 25%.

Corrective action proposed (if required):

It is necessary to maintain the Council's record of not refusing applications without good planning reasons. The quality of the initial decision has a direct consequence upon appeal performance. Robust defence of the Council's decision is essential, prioritising internal resource and using external consultancy resources where appropriate.